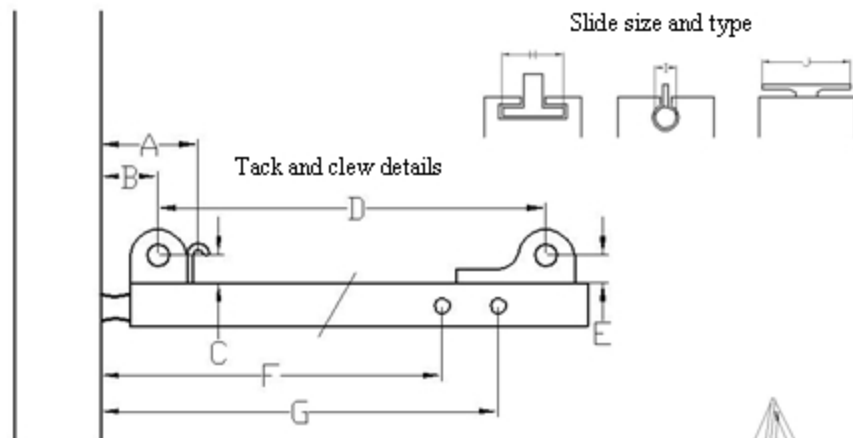




## Sperry Sails Mainsail Measuring Diagram



- A- Aft face of mast to reef hook \_\_\_\_\_
- B- Aft face of mast to tack pin \_\_\_\_\_
- C- Top face of boom to tack pin \_\_\_\_\_
- D- Tack pin to max outhaul pin \_\_\_\_\_
- E- Top face of boom to clew pin\* \_\_\_\_\_
- F- Aft face of mast to reef cheek block\*\* \_\_\_\_\_
- G- Aft face of mast to reef cheek block\*\* \_\_\_\_\_
- H- Width of internal slide \_\_\_\_\_
- I- Diameter of slug \_\_\_\_\_
- J- Width of external track \_\_\_\_\_
- K- Attach tape measure to halyard and hoist  
until it stops. Measure to the top of the boom \_\_\_\_\_
- L- With the halyard at the same location, hold  
the boom at the proper height and measure  
to the max outhaul position \_\_\_\_\_



Luff and leech dimensions

\* If no clew car, measure clew slug diameter

\*\* If applicable

Feel free to call for assistance

508-748-2581